

Opening Athenaeum using FileMaker

Athenaeum Note 42

Versions of FileMaker and Athenaeum that work together

FileMaker Pro 7.0v4

- Athenaeum Pro 7
- Athenaeum Light 7

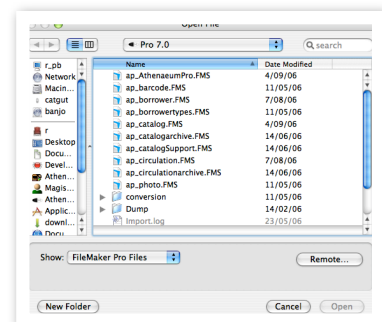
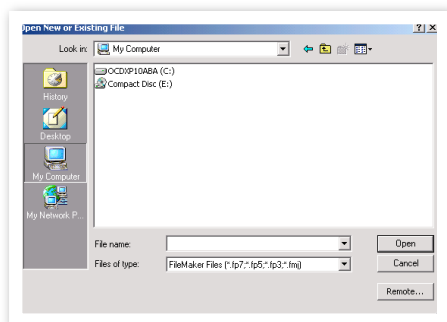
FileMaker Pro 8.0v3 and FileMaker Pro 8.5v1

- Athenaeum Pro 7.5
- Athenaeum Pro 7.0
- Athenaeum Express 8.0
- Athenaeum Light 7.0

Launch FileMaker Pro

Ensure Athenaeum is not running.

Start FileMaker Pro in the normal manner. FileMaker will normally prompt you to open a file



Opening Athenaeum on your local hard disk

Navigate to your Athenaeum folder on your hard disk and select the following file:

Athenaeum Version	Open this file
Athenaeum Pro 7.5	ap_AthenaeumPro
Athenaeum Pro 7.0	ap_AthenaeumPro
Athenaeum Express 8.0	Athenaeum Express
Athenaeum Light 7.0	Athenaeum Light

Note that, depending upon how your operating system is configured, you might see a file name extension (.FMS or .fp7) at the end of the name.

Enter your Account and password as you normally would.

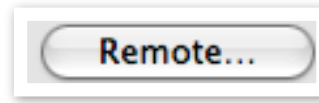
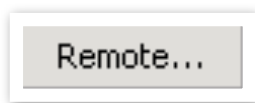
Note that you can create a simple FileMaker Pro document to perform either of the above tasks for you. Contact SumWare Consulting support via e-mail support@sumware.co.nz for assistance, if you need it.

Opening Athenaeum over your network

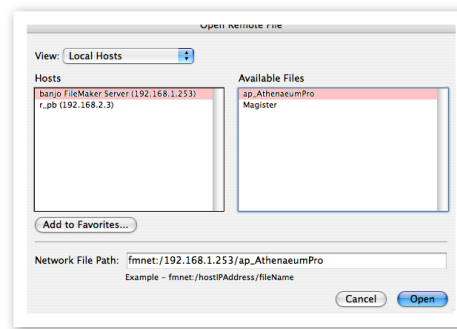
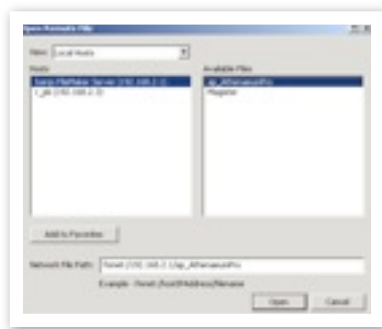
If you are hosting Athenaeum using FileMaker Server, the server computer must be running and FileMaker Server must currently have the files hosted.

If you are hosting Athenaeum using a copy of FileMaker Pro on another computer on the network (peer-to-peer networking), that copy of FileMaker Pro must be running, with Athenaeum open and shared.

Launch FileMaker Pro, as above.



When the Open Dialog box is displayed, click the Remote... button at the bottom right



On the left hand side of the open remote dialog, choose the appropriate FileMaker host. Most installations will only have 1 host.

Then click on the appropriate file in the list of available files - choosing the name of the file corresponding to your version of Athenaeum (see above).

Enter your account and password in the normal manner.